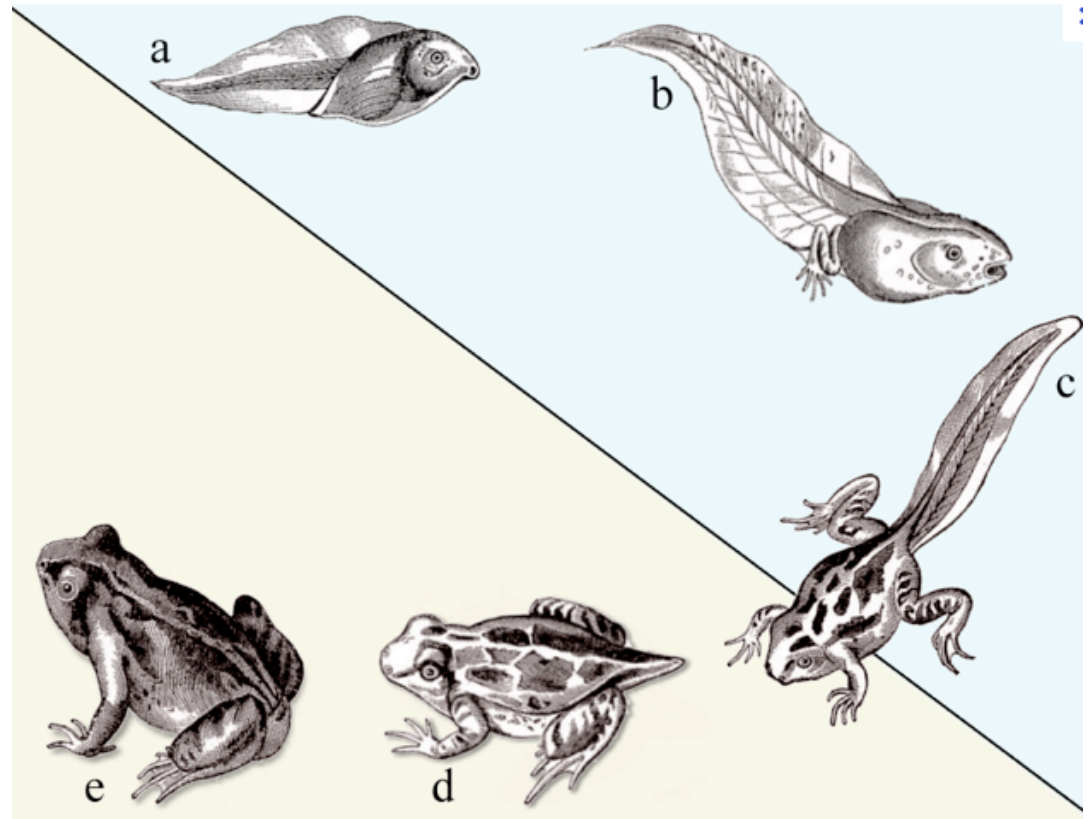


# Transformation

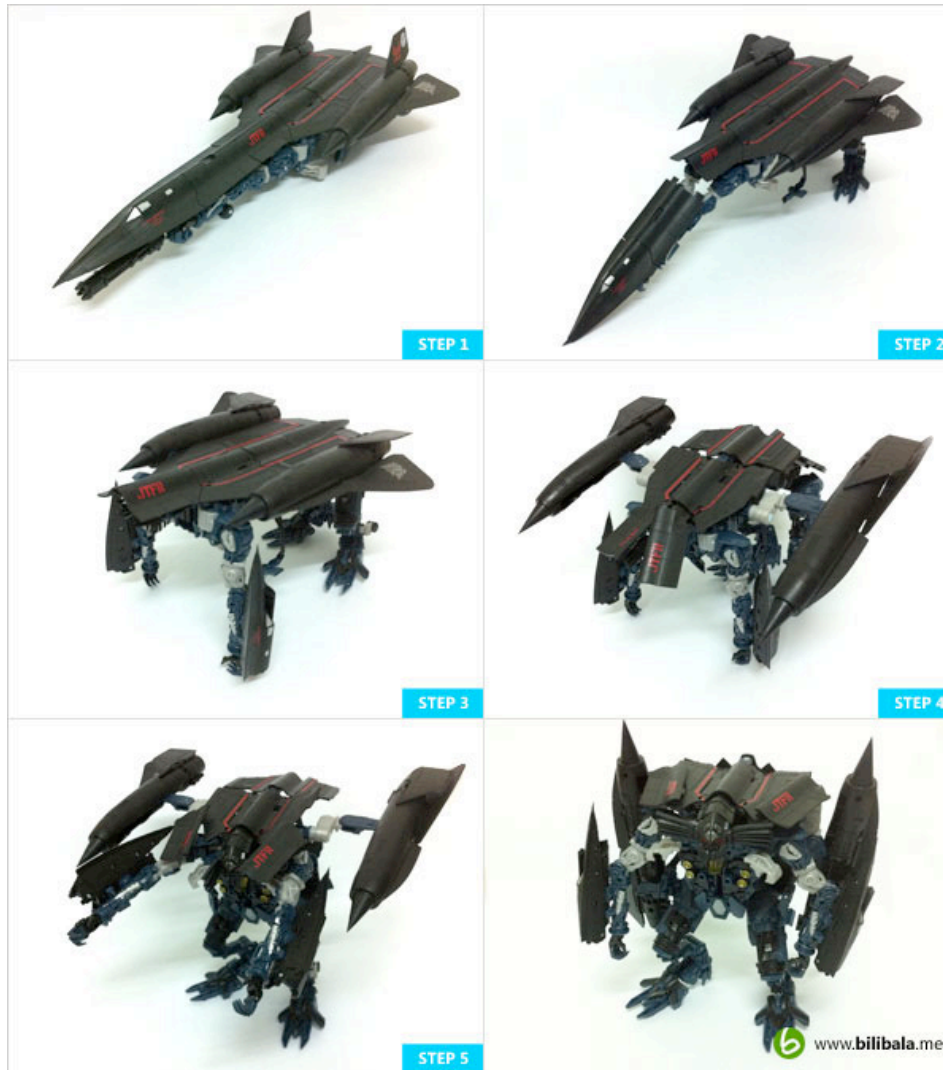
# Transformation

- Defined as a change in form.
- Biology
- Relates to cognitive development
- Symbolic
- Speaks to the continuous evolution of an individual



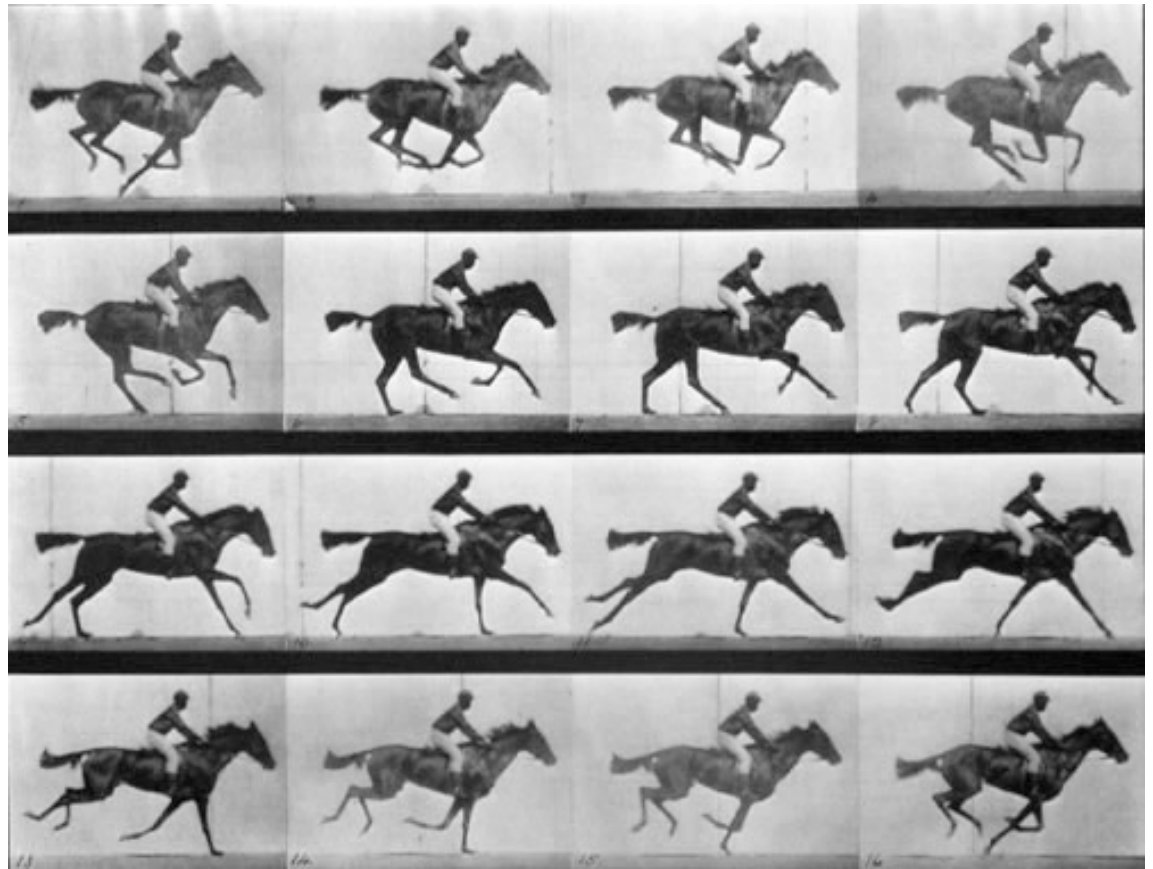
# Transformers

- Contemporary example



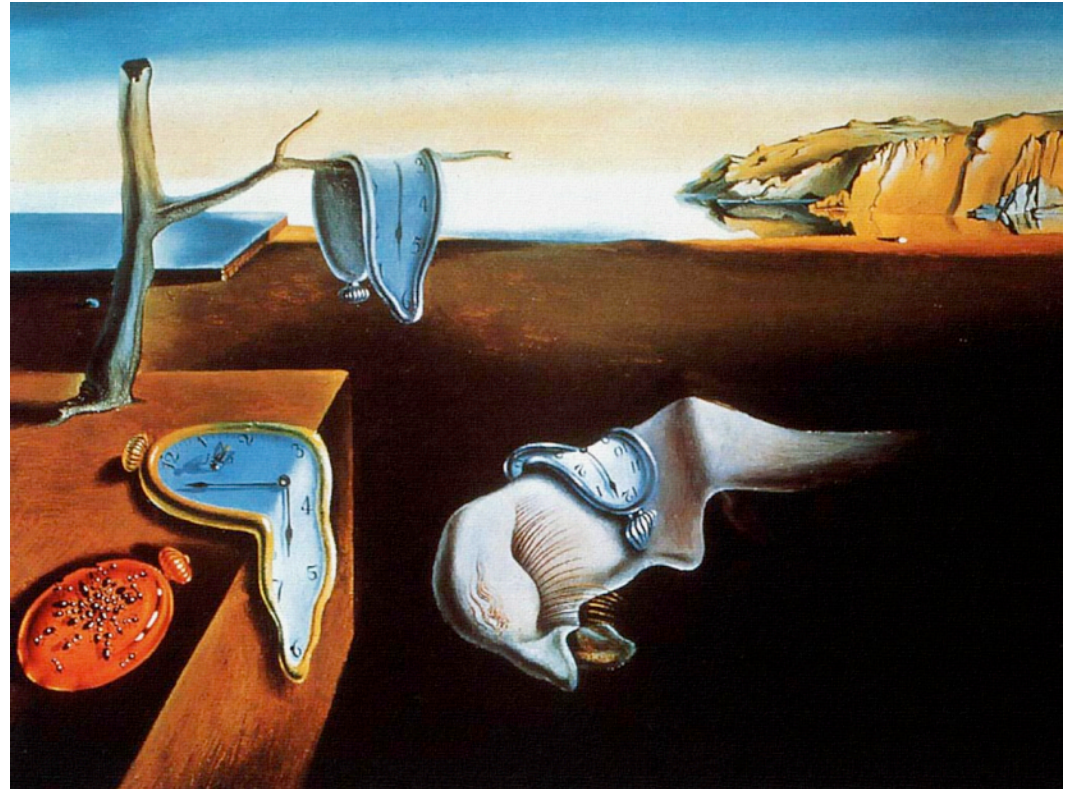
## Sequencing

- The way you sequence panels will describe movement to the viewer



## Salvador Dali

- Spanish Surrealist
- 1904-1989
- Symbol heavy paintings
- Objects represent aspects of his life.
- Used principle of Gestalt often





## Use of Gestalt

- Gestalt: Organized whole that is perceived as more than the sum of its parts.
- Delivers images with multiple meanings
- Allows for subliminal messages



## Use of Photography

- Motion
- Framing
- Experimental Manipulation



## Use of ready made objects

What do you notice about this image?

What effect does this juxtaposition have?





# Destino

[https://www.youtube.com/watch?  
v=1GFkN4deuZU](https://www.youtube.com/watch?v=1GFkN4deuZU)